



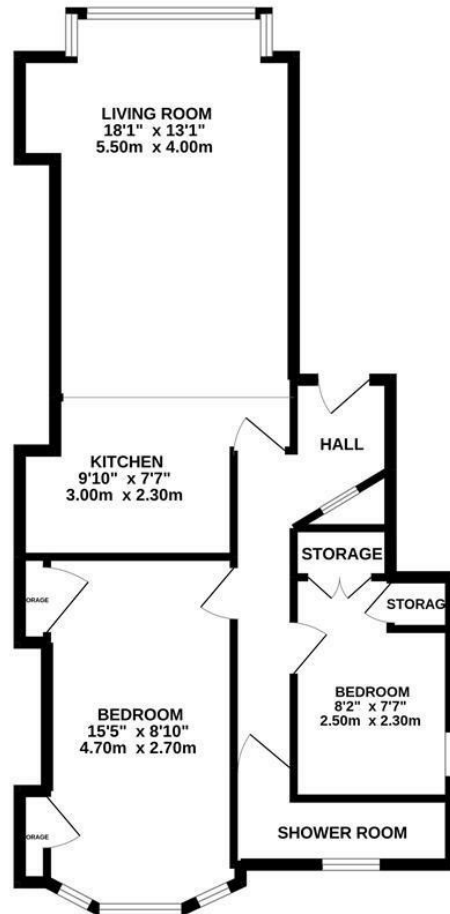
## Quarry Crescent, Hastings TN34 3SD

Offers in excess of £190,000



Beautifully presented TWO BEDROOM APARTMENT located on the GROUND FLOOR of this period residence, set in an attractive and peaceful crescent. It's enviably positioned within walking distance of Hastings Town Centre, the seafront and Alexandra Park and benefits from good transport links. The accommodation here enjoys a bright OPEN PLAN LIVING SPACE with a large bay window, framing a LEAFY OUTLOOK and features a MODERN FITTED KITCHEN with a handy breakfast bar. The two bedrooms both house BUILT IN STORAGE with the principle bedroom relishing FAR REACHING VIEWS with BALCONY and there is a STYLISH SHOWER ROOM to the rear. Being sold with a long lease and set in a PRIME POSITION, this fantastic property would make the PERFECT FIRST TIME HOME or seaside retreat and is not to be missed.

GROUND FLOOR  
667 sq.ft. (61.9 sq.m.) approx.



TOTAL FLOOR AREA : 667 sq.ft. (61.9 sq.m.) approx.

Whilst every attempt has been made to ensure the accuracy of the floorplan contained here, measurements of doors, windows, rooms and any other items are approximate and no responsibility is taken for any error, omission or mis-statement. This plan is for illustrative purposes only and should be used as such by any prospective purchaser. The services, systems and appliances shown have not been tested and no guarantee as to their operability or efficiency can be given.  
Made with Metropix ©2022

